

# BICYCLE SHELTERS

## "M" BARREL ROOF BICYCLE SHELTER WITH GLASS CLADDING

### TECHNICAL CHARACTERISTICS

- > Dimensions: 2500 mm wide x 2635 mm high x 2090 mm deep
- > Structure: galvanised steel tubes 80 x 80 mm
- > Roof: 40 x 60 mm aluminium crossbars and rain gutters, painted in our colours, anti-UV-treated 6 mm cellular polycarbonate dome
- > Cladding: 8 mm safety glass
- > Finish: painted in our colours
- > Extension: 2500 mm wide



Code 529022 + 204719

### INSTALLATION

- > Delivered flat packed, for self-assembly
- > On base plates, a choice of fixed or height-adjustable feet

### OPTIONS

- > Side cladding: 8 mm safety glass

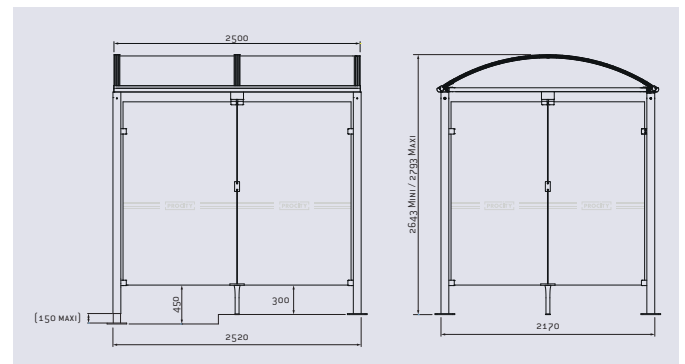
### PRODUCT CODES

|   | Fixed height feet | Fixed height feet |
|---|-------------------|-------------------|
| Basic shelter (includes back cladding)                | 529020            | 529024            |
| Extension shelter (includes back cladding)            | 529021            | 529025            |
| "All-in-one" 2500mm shelter with back & side cladding | 529022            | -                 |
| "All-in-one" 5000mm shelter with back & side cladding | 529023            | -                 |
| <b>Optional</b>                                       |                   |                   |
| Safety glass side cladding (1 side)                   | 529026            | 529027            |



Code 529024

### DRAWING



### FINISH PAINTED

Painted in our colours

