

TECHNICAL CHARACTERISTICS

- > Two lengths: 2500 or 5000 mm
- > Total depth: 1600 mm
- > Square posts: 80 x 80 mm steel tubes on base plates
- > Under roof height: 2500 mm
- > Roof: 6 mm anti-UV-treated cellular polycarbonate
- > Roof frame: 40 x 60 mm aluminium-tube crossbars and aluminium-profile rain gutters. Barrel roof supports made from curved aluminium profiles
- > Rear and side cladding: 8 mm security glass with safety etching
- > Cladding attachments: pinch-grip system made from Zamak alloy with brushed finish
- > Timetable display case: 750 x 550 mm (4 A4) x 30 mm deep, in anodised aluminium. Replaceable and reversible door. Glazing 4 mm plexichoc. Security lock 2 keys. Elastomer gasket. Backplate white lacquered galvanised sheet metal. Fixings provided

Advertising space

- > Light box double face
 - 150 mm deep aluminium frame
 - Integral with the shelter
 - Display area: h 1710 x 1160 mm
 - Quick change of posters at chest height
 - Easy replacement of the glass in the event of breakage
- > Double sided "2000" notice board / poster case
 - 75 mm deep aluminium frame
 - Attached to the shelter, fixed to the posts by clamps
 - Raising door in 4 mm security glass door assisted by gas struts
 - Display area: h 1750 x 1200 mm
 - Lighting optional, contact us

INSTALLATION

- > Installation: on base plates
- > Assembly and installation instruction available
- > *Note:* do not install benches or perch seats near the light box or the "2000" display case, in order to avoid blocking the opening

OPTIONS

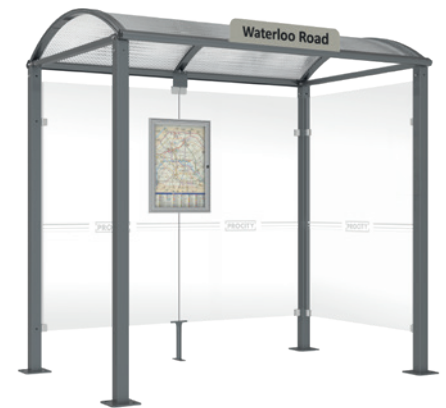
- > Bus stop sign (screen print not included.) - Code 529412
- > Wind protectors around roof (pair) - Code 529054
- > Perch seat - Code 209147
- > Option with LED lighting powered by 220V power supply. Electrical wiring (not included) must be installed by a professional electrician- Code 509041

FINISH PAINTED

- > Galvanised and painted in our colours

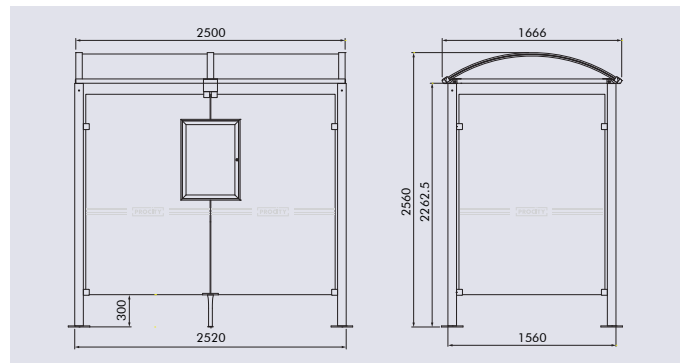


Code 529319 + 209160



Code 529308 + 529412

DRAWING



Code 529412



Code 529054

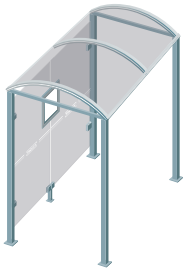


Code 209147



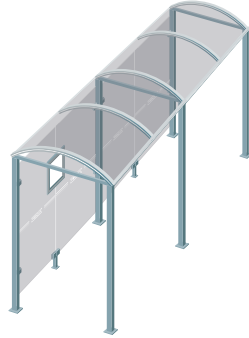
PRODUCT CODES

> All of our models are supplied with rear cladding and timetable display case



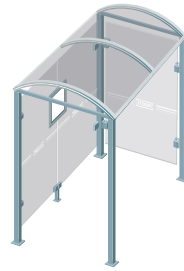
Length 2500 mm
with no side cladding

529208



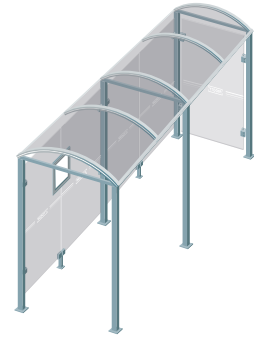
Length 5000 mm
with no side cladding

529209



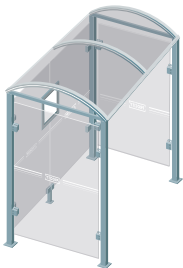
Length 2500 mm
with one side cladding

529308



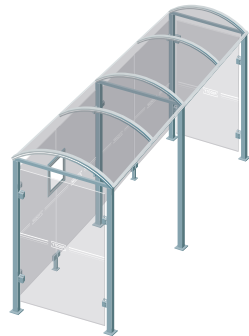
Length 5000 mm
with one side cladding

529309



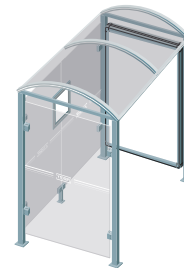
Length 2500 mm
with two side claddings

529318



Length 5000 mm
with two side claddings

529319



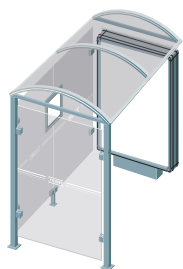
Length 2500 mm
with one "2000" display case and one side cladding

529338



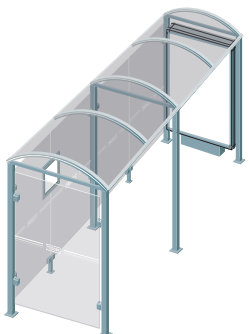
Length 5000 mm
with one "2000" display case and one side cladding

529339



Length 2500 mm
with one light box and one side cladding

529358



Length 5000 mm
with one light box and one side cladding

529359



Code 529338 + 209160