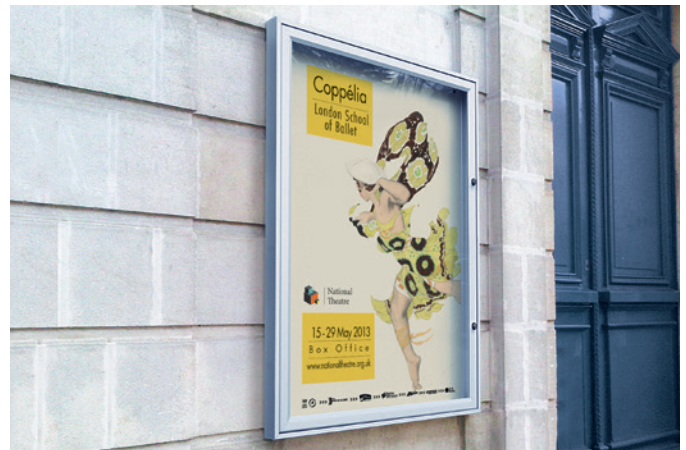


TECHNICAL CHARACTERISTICS

- > Thickness: 58 mm
- > Display: single-sided
- > Display size: from 4 to 21 A4
- > Glazing: Plexichocs® or 4 mm thick safety glass
- > Opening system: reversible side opening door or raising door with gas struts for larger sizes
- > Closure: safety lock with 2 keys.
2 locks on 1350 mm high side opening doors and on raising doors
- > Waterproofing: elastomer seal
- > Aluminium frame
- > Procity® magnets: included (1 per A4, limited to 20 per notice board)



Code 506004

INSTALLATION

- > Wall-mounted (Fittings not supplied) or post-mounted

OPTION

- > Posts: 60 x 40 mm
- > Header panel: Dome or Rectangle
- > LED lighting kit



Code 406002

PRODUCT CODES & DIMENSIONS



	4 A4	6 A4	8 A4	9 A4	12 A4	16 A4	18 A4	21 A4
Outside dimensions	H 750 x W 550 mm	H 750 x W 750 mm	H 830 x W 980 mm	H 1050 x W 750 mm	H 1350 x W 750 mm	H 1350 x W 1000 mm	H 1080 x W 1330 mm	H 1130 x W 1600 mm
Visible display surface	H 653 x W 453 mm	H 653 x W 653 mm	H 733 x W 883 mm	H 953 x W 653 mm	H 1253 x W 653 mm	H 1253 x W 903 mm	H 983 x W 1233 mm	H 1033 x W 1503 mm
Door type	Side opening	Side opening	Side opening	Side opening	Side opening	Side opening	Raising	Raising
Plexichoc® glazing								
Anodised	506000	506001	506080	506002	506003	506004	506081	506082
Painted	406000	406001	406080	406002	406003	406004	406081	406082
Safety glass glazing								
Anodised	506350	506351	506480	506352	506353	506354	506481	506482
Painted	406350	406351	406480	406352	406353	406354	406481	406482
Optional LED kit	509115	509116	509117	509116	509123	509102	509136	509106

FINISH PAINTED

- > Interior finish: white lacquered galvanised sheet metal backplate, back painted light grey
- > Frame finish: silver anodised aluminium or painted to match our range of notice board colours



TECHNICAL CHARACTERISTICS

Original posts

- > Two 60 x 40 mm silver anodised or painted aluminium posts
- > Black top cap
- > Posts are side mounted with brackets that fit to the back of the noticeboard - 4 brushed stainless steel mounting brackets supplied
- > Fixing to the baseplates or concreted directly into the ground

Additional post

- > To link several "Tradition" or "Classic" notice boards together on posts (except notice boards ≥ 1200 mm wide)
- > One 60 x 40 mm post supplied with 2 brushed stainless steel mounting brackets
- > Please note: the 60 x 40 Plus post for the "Tradition" notice board differs from the 60 x 40 Plus post for the "Classic" notice board



Code 405003 + 416356 + 416460



Code 505075 + 516358

INSTALLATION

- > Installation by concreting directly into the ground (total height of post: 2600 mm) or on a baseplate (total height of post: 2200 mm)
- > Additional post: to be concreted directly into the ground only

PRODUCT CODES

	Anodised	Painted
For Tradition single-door notice boards and Classic single-door notice boards (up to 9 A4)		
Kit containing 2 original posts on baseplates (H 2200 mm)	516357	416357
Kit containing 2 original posts to be concreted directly into the ground (H 2600 mm)	516356	416356
Additional post to be concreted directly into the ground (H 2600 mm) for the Tradition notice board	516460	416460
Additional post to be concreted directly into the ground (H 2600 mm) for the Classic notice board	516470	416470
For Tradition dual door notice board and Classic single door or raising door notice board (from 12 A4)		
Kit containing 2 original posts to be concreted directly into the ground (H 2600 mm)	516358	416358
Additional post to be concreted directly into the ground (H 2600 mm) for the Classic notice board**	516470	416470



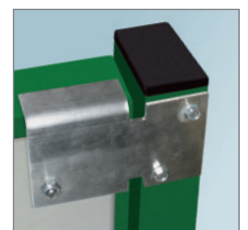
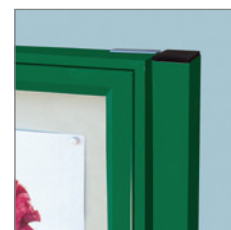
Code 406081 + 416358 + 409036*



Code 505003 + 516356

FINISH PAINTED

- > Posts in silver anodised aluminium or painted to match our range of notice board colours



TECHNICAL CHARACTERISTICS

- > 2 mm thick sheet steel header board
- > 2 shapes: Dome or Rectangle
- > Silk-screen printing: not supplied



Dome* header panel



INSTALLATION

- > Supplied without fittings. Attached to a wall using the pre-drilled mounting holes via fittings (not supplied) or via fittings (supplied) with the 60 x 40 mm post kit
- > For safety reasons, header panels cannot be installed on notice boards with posts on baseplates or with additional posts



Rectangle* header panel

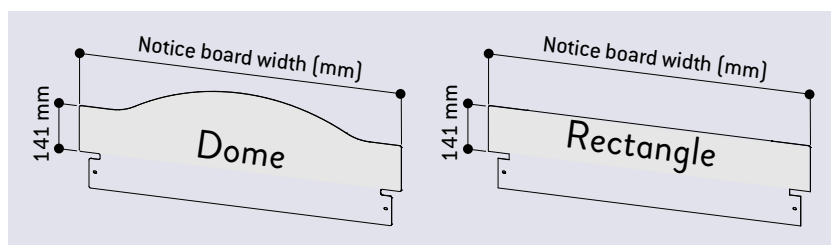
PRODUCT CODES & DIMENSIONS

	 Dome	 Rectangle
External width of notice board		
550 mm	409000	409030
750 mm	409001	409031
980 mm	409003	409033
1000 mm	409004	409034
1200 mm	409005	409035
1330 mm	409006	409036
1400 mm	409007	409037
1600 mm	409008	409038



Code 405075 + 409035*

DRAWING



FINISH PAINTED

- > Painted in our range of notice board colours



TECHNICAL CHARACTERISTICS

- > High-quality white light, 120 lumens per watt, LED: IP 20, 4000 kelvin
- > IP 67 transformers
- > Run time: 75,000 operating hours
- > Power consumption: 12.5 watts per linear metre
- > Reference table: see the product code for the applicable sized notice board
- > Wiring recommendations (maximum distance per linear metre of LED ribbon):
 - 5 m with 2 x 0.75 mm cable
 - 10 m with 2 x 1.5 mm cable
 - 15 m with 2 x 2.5 mm cable
- > Kits consisting of one or more adhesive LED ribbons and a transformer, depending on the size of the notice board
- > Please note that LED kits are not suitable for display lighting

INSTALLATION

- > Installation required: Not Factory fitted.
- > Warning: the electrical connection must be carried out by a professional Electrician and comply with current applicable safety regulations



Code 407084 + 509117



Code 406080 + 509117

PRODUCT CODES & DIMENSIONS

	LED ribbon length	Number of LED ribbons
Transformer power - 18 W		
509100	450 mm	1
509101	650 mm	1
509103	1150 mm	1
509115	500 mm	1
509116	700 mm	1
509117	900 mm	1
509120	1100 mm	1
509121	1300 mm	1
509130	950 mm	1
509135	800 mm	1
509136	1250 mm	1
Transformer power - 36 W		
509123	700 mm	2
509102	950 mm	2
509106	1550 mm	1
509108	1750 mm	1
509109	1950 mm	1
509131	1350 mm	1
Transformer power - 60 W		
509104	1300 mm	2
509107	1650 mm	2
509110	2250 mm	1
509124	700 mm	4
509132	950 mm	4
509133	1550 mm	2
509138	1950 mm	2
Transformer power - 100 W		
509134	1650 mm	4
509137	1300 mm	4